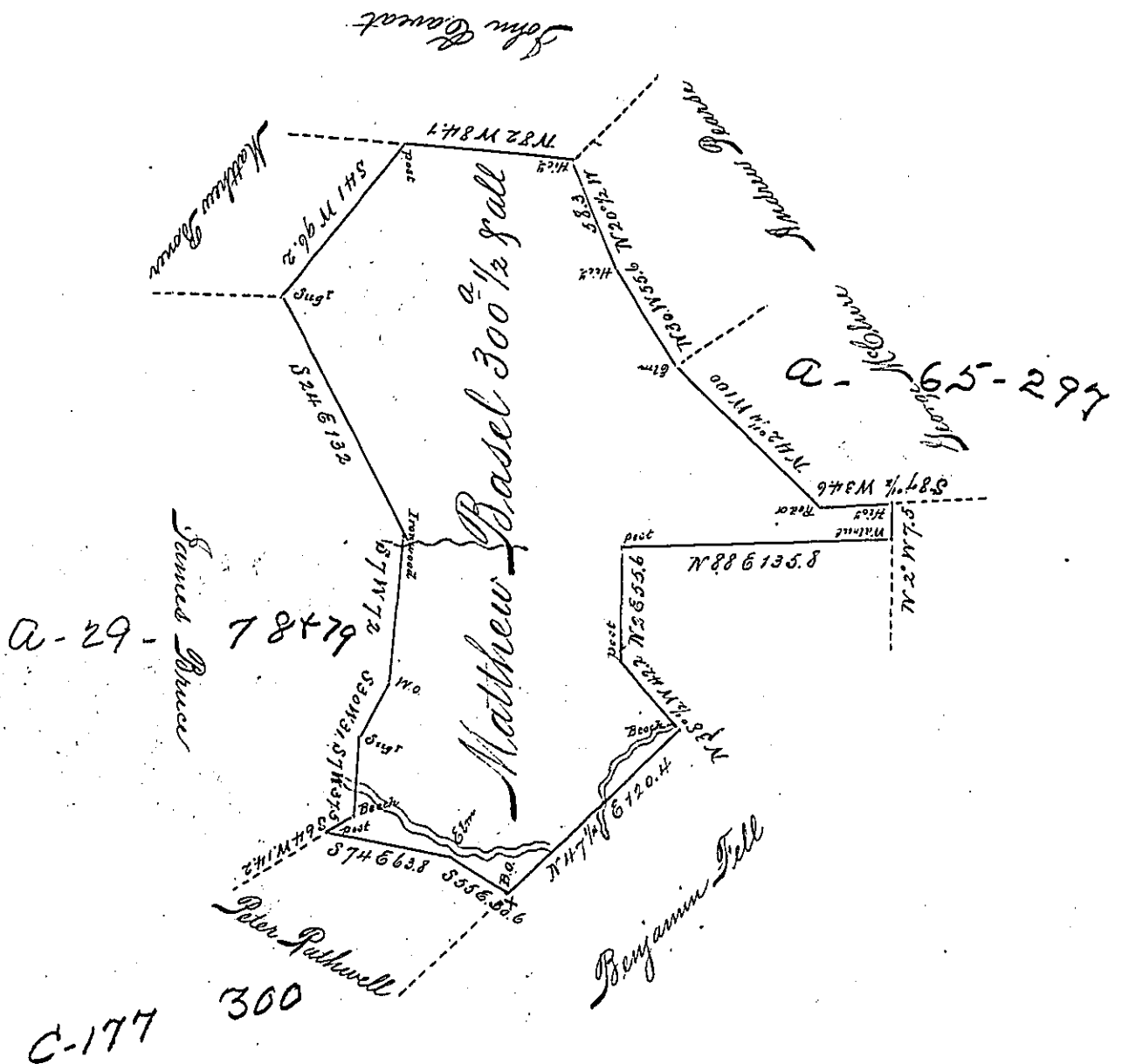


Page 232



Situate on the East Side of Monongahela River in
 Posttraver Township Westmoreland County and
 Surveyed the 21st Day of February 1786. In pursuance
 of a Warrant dated the 17th day of December 1784
 by Alexander McClean Dep^y
 To John Lukens Esquire }
 Surveyor General }

IN TESTIMONY that the above is a copy of the original remaining on file in the
 Department of Internal Affairs of Pennsylvania, made con-
 formably to an Act of Assembly approved the 16th day of
 February, 1833. I have hereunto set my Hand and caused
 the Seal of said Department to be affixed at Harrisburg, this
 third day of September 1895.
 James O. Watters
 Secretary of Internal Affairs.